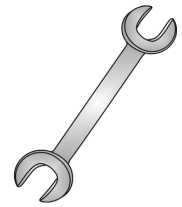




Tow-Trust Towbars

Important: Please read General Notes overleaf before fitting

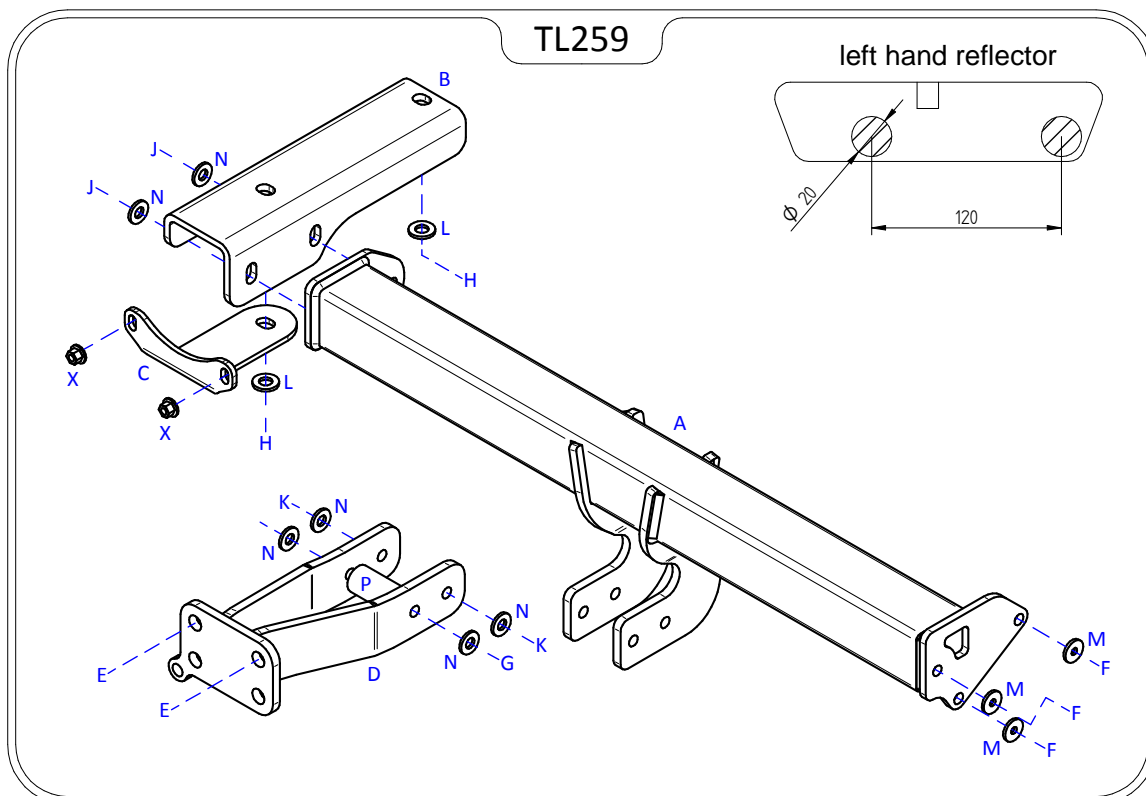


Issue 7

TL259 LAND ROVER FREELANDER 2 2006>

| Item | Qty | Description | Item | Qty | Description |
|------|-----|---------------------|------|-----|---|
| A | 1 | TL259 Crossmember | E | 2 | M16 x 50 Bolts & Nyloc Nuts |
| B | 1 | L/H Side Arm | F | 3 | M10 x 35 (12.9) Cap Head Bolts, 2 Nuts & 3 S/P Washers |
| C | 1 | L/H Chassis Bracket | F1 | 3 | M10 x 35 (10.9) Bolts |
| D | 1 | Extension | G | 1 | M12 x 130 (10.9) Bolt & Nyloc Nut |
| | | | H | 2 | M14 x 100 Bolts & S/P Washers |
| | | | J | 2 | M12 x 35 (10.9) Bolts, 1 Nyloc Nut & 1 S/P Washer |
| | | | K | 2 | M12 x 40 (10.9) Bolts & Nyloc Nuts |
| | | | L | 2 | 14 x 27 Flat Washers |
| | | | M | 3 | 10 x 25 Flat Washers |
| | | | N | 6 | 12 x 25 Flat Washers |
| | | | P | 1 | 30mm O/D x 60mm Long Spacer Tube |
| | | | Q | 6 | M12 Bolt Caps |

1. Remove the five fasteners from the lower edge of the bumper, and the left hand bumper reflector.
2. Drill two 20mm holes SEE SKETCH in the reflector recess.
3. Using Item F or F1 (which ever you find easiest, please ensure the Nuts & S/P Washers are used from item F when using Item F1) with Item M fix Item A to the existing holes in the right hand towing eye.
4. Using Item H with Item L loosely fix Item B to the forward existing threaded hole in the left hand chassis member.
5. Remove the two M8 nuts from the existing studs on the left hand side of the rear panel.
6. Locate Item C over the studs and loosely secure using the existing nuts.
7. Using Item H with Item L loosely fix Item C and Item B to the existing rearmost threaded hole in the left hand chassis member.
8. Using Item J with Item N fix Item A to Item B.
9. Using Item G and Item N and Item K with Item N fix Item D to Item A ensuring Item P is fitted between the rearmost point.
10. Using Item E fix your desired ball bracket and wiring plate (not supplied in this kit) to the face plate.
11. Fully tighten all nuts and bolts ensuring the Towbar is rigid, square and secure.
12. Reattached the bumpers lower edge using the original fixings and refit the reflector.



Note:

1. Recommended Torque Setting for M12 Grade 10.9 -130 Nm. (For other Torque Settings see notes overleaf.)
2. Recommended Torque Setting for M10 Grade 12.9 -70 Nm. (For other Torque Settings see notes overleaf.)
3. Nose load limits and vehicle manufacturers trailer / caravan weight limits must be observed.