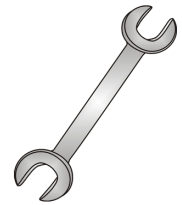




Tow-Trust Towbars

Important: Please read General Notes overleaf before fitting



Issue 1

TJEEP3VK JEEP CHEROKEE (KL) 2014>

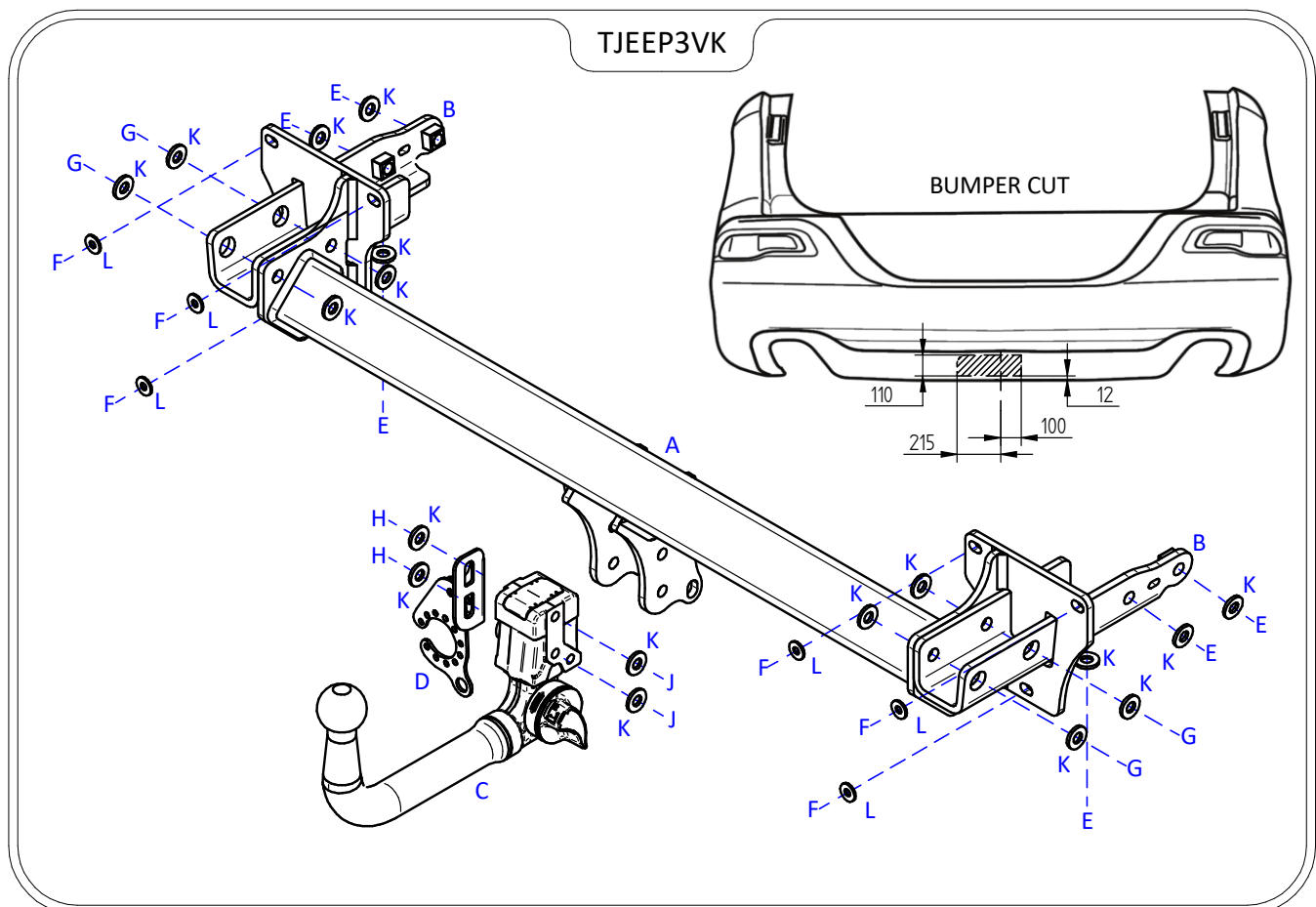
Item	Qty	Description	Item	Qty	Description
A	1	TJEEP3 Crossmember	D	1	Flip Up Socket Plate (TTFP/LH)
B	2	Handed Side Arms	E	6	M12 x 35 Bolts & S/P Washers
C	1	6214 Detachable Neck	F	6	M8 Nyloc Nuts
			G	4	M12 x 40 Bolts & Nyloc Nuts
			H	2	M12 x 25 Bolts & S/P Washers
			J	2	M12 x 22 Bolts & S/P Washers
			K	18	12 x 25 Flat Washers
			L	6	8 x 25 Flat Washers

BUMPER REMOVAL:

1. Remove rear light clusters, two fixings on each light around boot shut area.
2. Remove six fixings from the bumper lower edge, one fixing in each wheel arch. Carefully peel back wheel arch trim to reveal one tip fixing, one fixing either side of boot shut area, carefully remove the rear bumper unplugging any necessary wiring looms.
3. Remove the rear impact beam, this is not refitted with the Towbar assembly.

TOWBAR INSTALLATION:

1. Insert Items B into each correct chassis and fix in place using Item E and Item K.
2. Fix Item A to the rear panel using Item F and Item L. Fix Item A to Items B using Items G and Item K.
3. Using Item H with Item K and Item J with Item K fix Item C and Item D to Item A.
4. Fully tighten all fixings ensuring the Towbar is rigid, square and secure.
5. Cut the rear bumper as shown below.
6. Refit the rear bumper.



Note:

1. Torque Settings see notes overleaf.
2. Nose load limits and vehicle manufacturers trailer / caravan weight limits must be observed.